

INTRODUCTION:

This instruction is designed to allow the modification of electric connection of Pass Through Dishwashers.

Please note that Pass Through Dishwashers are not equipped with electric cable.

Original wiring connection:

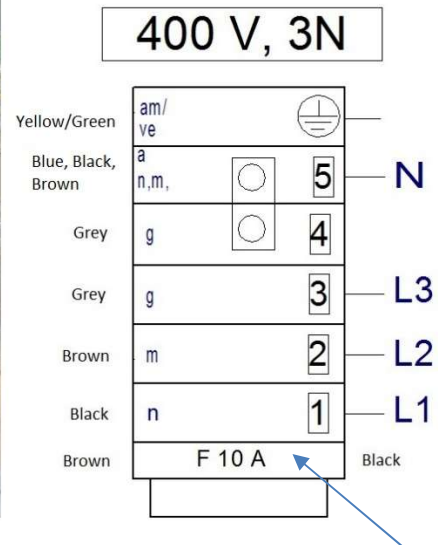
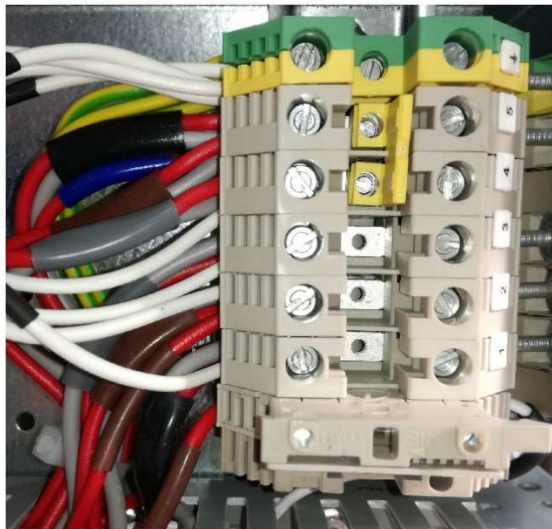


Figure 1. Default electric connection.

Fuse – only in TECH models

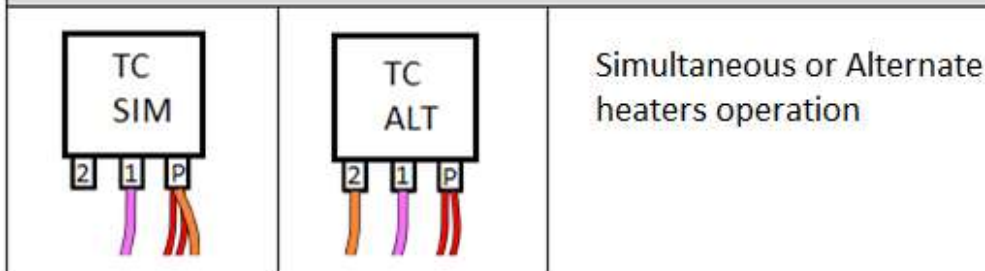
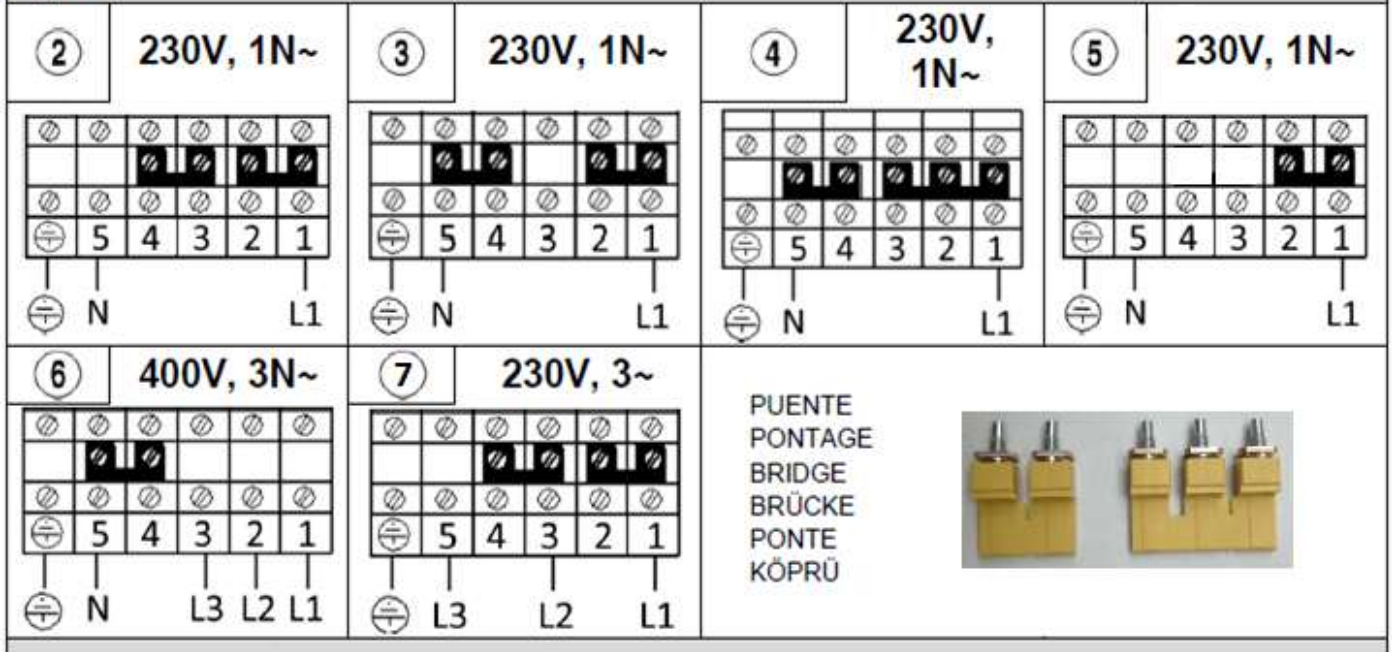
The voltage configuration of the machine is stipulated on the nameplate. If the mains voltage supply is not the same as that stipulated on the machine, there is a terminal box from which the different voltage options can be configured (230V 1N~, 230V 3~ or 400V 3N~). See Figure. 2.

In the event of a change, the supplier must be notified to ensure that the machine’s guarantee remains valid.

To access the terminal holder, remove the front panel.

	ONLY AUTHORISED AND QUALIFIED PERSONNEL may change the electrical configuration. Users may not tamper with the machinery.
--	--

Figure 2.



⊕:	Tierra	Terre	Earth	Erde	Terra	Topraklaması
N:	Neutro	Neutre	Neutral	Neutralleiter	Neutro	Nötr
L1, L2, L3:	Fase	Phase	Phase	Phase	Fase	Faz
TC:	Termostato Calderín	Thermostat De chaudière	Boiler Thermostat	Kessel- Thermostat	Termostato caldaia	Boiler Termostati
CC:	Contactora Calderín	Contacteur de chaudière	Boiler Contactor	Kessel Schütz	Contattore caldaia	Boiler kontaktör



50Hz // 60Hz // 50/60Hz

Compruebe la frecuencia de su aparato
Vérifiez la fréquence de votre appareil
Check the frequency of your machine

Überprüfen Sie die Frequenz des Geräts
Controllare la frequenza del dispositivo
Kontrol edin sizin makinanızın frekansı

Models	G-OEM-H500, GT-OEM-H500, OEM EASY-H500, OEM TECH-H500							
Electrical connection			Tank Heater (kW)	Boiler Heater (kW)	Wash pump (kW)	Rated power (kW)	Rated current (A)	Recommended cable
230V, 1N	⑤	SIM	1,5	2	0,6	4,1	17,8	3G x 2,5 mm ²
	②		2,25	3		5,9	25,7	3G x 4 mm ²
	③		3	4		7,6	33	3G x 6 mm ²
	④		4,5	6		11,1	48,3	3G x 10 mm ²
230V, 1N	⑤	ALT	1,5	2	0,6	2,6	11,3	3G x 1,5 mm ²
	②		2,25	3		3,6	15,7	3G x 2,5 mm ²
	③		3	4		4,6	20	3G x 4 mm ²
	④		4,5	6		6,6	28,7	3G x 6 mm ²
230V, 3	⑦	SIM	4,5	6	0,6	11,1	29	4G x 6 mm ²
	⑦	ALT	4,5	6		6,6	17,7	4G x 2,5 mm ²
400V, 3N	⑥	SIM	4,5	6	0,6	11,1	17,8	5G x 2,5 mm ²
	⑥	ALT	4,5	6		6,6	11,3	5Gx 1,5 mm ²

FACTORY DEFAULT ELECTRICAL CONNECTION marked on green.